



## Thaw and Culture Details

Cell Line Name	<b>JHU188i</b>
WiCell Lot Number	<b>DB36766</b>
Provider	Johns Hopkins University – Laboratory of Dr. Lewis Becker
Banked By	Johns Hopkins University – Laboratory of Dr. Lewis Becker
Thaw and Culture Recommendations	WiCell recommends thawing 1 vial into 2 wells of a 6 well plate. WiCell recommends thawing using ROCK Inhibitor for best results.
Culture Platform	Feeder Independent
	Medium: E8
	Matrix: Vitronectin
Protocol	WiCell Feeder Independent E8 Medium Protocol
Passage Number	p12 These cells were cultured for 12 passages post reprogramming prior to freeze. Add +1 to the passage number to best represent the overall passage number of the cells at thaw.
Date Viald	30-January-2015
Vial Label	P188 P12 1/30/15 1.0x10 <sup>6</sup>
Biosafety and Use Information	This cell line is of human origin. Appropriate biosafety precautions should be followed when working with these cells. The end user is responsible for ensuring that the cells are handled and stored in an appropriate manner. WiCell is not responsible for damages or injuries that may result from the use of these cells. Cells distributed by WiCell are intended for research purposes only and are not intended for use in humans.

## Testing Performed by WiCell

Test Description	Test Provider	Test Method	Test Specification	Result
Karyotype by G-banding	WiCell	SOP-CH-003	Expected karyotype	See Report
Post-Thaw Viable Cell Recovery	WiCell	SOP-CH-305	Recoverable attachment after passage	Pass
Identity by STR	UW Translational Research Initiatives in Pathology Laboratory	PowerPlex 16 HS System by Promega	Defines profile	Pass
Sterility	Steris	ST/07	Negative	Pass
Mycoplasma	WiCell	SOP-QU-004	Negative	Pass

## Testing Reported by Provider

The Provider stated that some or all of the additional analyses listed below may have been performed for this cell line. For more information, publication and dbGaP links, where available, are provided on the cell line specific web page on the WiCell website.

- Embryoid bodies
- Infinium® Expanded Multi-Ethnic Genotyping Array (MEGA<sup>EX</sup>)



Approval Date	Quality Assurance Approval
14-July-2016	<p style="text-align: right;">6/21/2018</p> <p>X JKG</p> <hr/> <p><small>WiCell Quality Assurance Signed by: Gay, Jenna</small></p>

**Date Reported:** Monday, June 04, 2018

**Cell Line:** JHU188i-DB36766 13700

**Passage#:** 14

**Date of Sample:** 5/29/2018

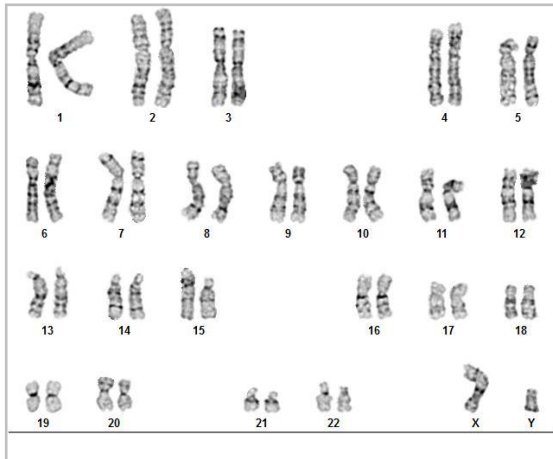
**Specimen:** Human IPS

**Results:** 46,XY

**Cell Line Sex:** Male

**Reason for Testing:** lot release testing

**Investigator:** [REDACTED], WiCell



**Cell:** 12

**Slide:** G03

**Slide Type:** Karyotype

**Total Counted:** 20

**Total Analyzed:** 8

**Total Karyogrammed:** 4

**Band Resolution:** 425 - 475

### Interpretation:

**This is a normal karyotype; no clonal abnormalities were detected at the stated band level of resolution.**

**Completed by:** [REDACTED], CG(ASCP)

**Reviewed and Interpreted by:** [REDACTED], PhD, FACMG

A signed copy of this report is available upon request.

**Date:** \_\_\_\_\_ **Sent By:** \_\_\_\_\_ **Sent To:** \_\_\_\_\_ **QC Review By:** \_\_\_\_\_

*Limitations: This assay allows for microscopic visualization of numerical and structural chromosome abnormalities. The size of structural abnormality that can be detected is >3-10Mb, dependent upon the G-band resolution obtained from this specimen. For the purposes of this report, band level is defined as the number of G-bands per haploid genome. It is documented here as "band level", i.e., the range of bands determined from the four karyograms in this assay. Detection of heterogeneity of clonal cell populations in this specimen (i.e., mosaicism) is limited by the number of metaphase cells examined, documented here as "# of cells counted".*

*This assay was conducted solely for listed investigator/institution. The results of this assay are for research use only. Unless otherwise mutually agreed in writing, the services provided to you hereunder by WiCell Research Institute, Inc. ("WiCell") are governed solely by WiCell's Terms and Conditions of Service, found at [www.wicell.org/privacyandterms](http://www.wicell.org/privacyandterms). Any terms you may attach to a purchase order or other document that are inconsistent, add to, or conflict with WiCell's Terms and Conditions of Service are null and void and of no legal force or effect.*

**Sample Report:**

13700-STR

**Sample Name on Tube:** 13700-STR

138.1 ng/μL, (A260/280=1.89)

**Sample Type:** Cells**Cell Count:** ~2 million cells**Requestor:**

WiCell Research Institute

Quality Department

**Sample Date:** N/A**Receive Date:** 05/29/18**Assay Date:** 05/29/18**File Name:** STR 180530c wmr**Report Date:** 06/04/18

STR Locus	STR Genotype Repeat #	STR Genotype
FGA	16-18,18.2,19,19.2,20,20.2,21,21.2,22, 22.2, 23, 23.2, 24, 24.2, 25, 25.2, 26-30, 31.2, 43.2, 44.2,45.2, 46.2	Identifying information has been redacted to protect donor confidentiality. If more information is required, please, contact <a href="#">WiCell's Technical Support</a> .
TPOX	6-13	
D8S1179	7-18	
vWA	10-22	
Amelogenin	X,Y	
Penta_D	2.2, 3.2, 5, 7-17	
CSF1PO	6-15	
D16S539	5, 8-15	
D7S820	6-14	
D13S317	7-15	
D5S818	7-16	
Penta_E	5-24	
D18S51	8-10, 10.2, 11-13, 13.2, 14-27	
D21S11	24,24.2,25,25.2,26-28,28.2,29,29.2, 30, 30.2,31, 31.2,32,32.2,33,33.2, 34,34.2,35,35.2,36-38	
TH01	4-9,9.3,10-11,13.3	
D3S1358	12-20	

**Results:** Based on the 13700-STR cells submitted by WiCell QA dated and received on 05/29/18, this sample (Label on Tube: 13700-STR) defines the STR profile of the human stem cell line JHU188i comprising 26 allelic polymorphisms across the 15 STR loci analyzed.

**Interpretation:** No STR polymorphisms other than those corresponding to the human JHU188i stem cell line were detected and the concentration of DNA required to achieve an acceptable STR genotype (signal/ noise) was equivalent to that required for the standard procedure (~1 ng/amplification reaction) from human genomic DNA. This result suggests that the 13700-STR sample submitted corresponds to the JHU188i stem cell line and was not contaminated with any other human stem cells or a significant amount of mouse feeder layer cells.

**Sensitivity:** Sensitivity limits for detection of STR polymorphisms unique to either this or other human stem cell lines is ~2-5%.



Digitally Signed on 06/05/18

[Redacted], BA  
TRIP Laboratory, Molecular

Digitally Signed on 06/05/18

[Redacted], PhD, Director / Co-Director  
UWHC Molecular Diagnostics Laboratory / UWSPH TRIP Laboratory

Testing was accomplished by analysis of human genetic polymorphisms at STR loci. This methodology has not yet been approved by the FDA and is for investigational use only.

Acknowledge TRIP in your publications, posters & presentations. For details, see: <http://www.pathology.wisc.edu/research/trip/acknowledging>

TRIP agrees to maintain the confidentiality of any information provided to it in connection with its performance of this STR analysis on the same conditions as set forth in paragraph 2 of WiCell's Terms and Conditions of Service (<http://www.wicell.org/media.acux/1a429b84-2b54-44a4-8ad8-5c05db93dd8a>).

# Native Product Sterility Report



WiCell  
504 S Rosa Rd, Rm 101  
Madison, WI 53719

SAMPLE #: 18050738  
DATE RECEIVED: 10-May-18  
TEST INITIATED: 14-May-18  
TEST COMPLETED: 29-May-18

SAMPLE NAME / DESCRIPTION: UCSD165i-97-1 WB66795 13679  
UCSD224i-NDC1-2 WB66797 13680  
UCSD224i-NDC1-2 WB66798 13681  
UWWC1-DS4 WB66799 13682  
WC035i-SOD1-D90D WB66757 13683  
JHU018i DB40957 13684  
JHU032i DB36206 13685  
JHU083i DB41146 13686  
JHU126i DB36258 13687  
JHU167i DB41380 13688  
JHU190i DB36770 13689  
JHU240i DB41420 13690  
JHU054i DB41080 13691  
JHU188i DB36766 13692  
JHU084i DB41149 13693  
JHU224i DB36895 13694  
JHU250i DB36904 13695  
JHU221i DB36885 13696  
JHU218i DB36874 13697  
JHU217i DB36868 13698

UNIQUE IDENTIFIER: NA  
PRODUCT REGISTRATION: Other: Human iPS cells

## TEST RESULTS:

# Tested	# Positives (Growth)	- Control
20	0	3 Negatives

## TEST SUMMARY:

# Samples	Media Type	Volume (mL)	Incubation Temperature (° C)	Incubation Duration (Days)
20	TSB	40	20-25	14
20	FTG	40	30-35	14

# Native Product Sterility Report



REFERENCE: Processed according to LAB-003: Sterility Test Procedure  
METHOD VALIDATION / PD #: 000053  
TEST METHODOLOGY: USP - Direct Transfer

COMMENTS: Sample #18050738

REVIEWED BY

A handwritten signature in blue ink, appearing to be "S. [unclear]", written over a horizontal line.

DATE

30 MAY 18

Specific test results may not be indicative of the characteristics of any other samples from the same lot or similar lots. This test report shall not be reproduced, except in full, without prior written approval. Liability is limited to the costs of the tests.



# Mycoplasma Detection Assay Report

Testing Performed by WiCell

Lot Release Testing

May 17, 2018

FORM SOP-QU-004.01

Version G Edition 02

Reported by: AP

Reviewed by: DF

BD Monolight 180

#	Sample Name	Reading A		A Ave	Reading B		B Ave	Ratio B/A	Result	Comments/Suggestions
		RLU1	RLU2		RLU1	RLU2				
1	JHU188i-DB36766 13700	286	296	291	84	88	86	0.30	Negative	
2	Positive (+) Control	476	464	470	16959	17172	17066	36.31	Positive	
3	Negative (-) Control	793	780	786.5	65	70	67.5	0.09	Negative	

